

# station studio mallorca

[www.stationstudiomallorca.net](http://www.stationstudiomallorca.net)

[+34] 653 780 568 . [info@stationstudiomallorca.net](mailto:info@stationstudiomallorca.net)





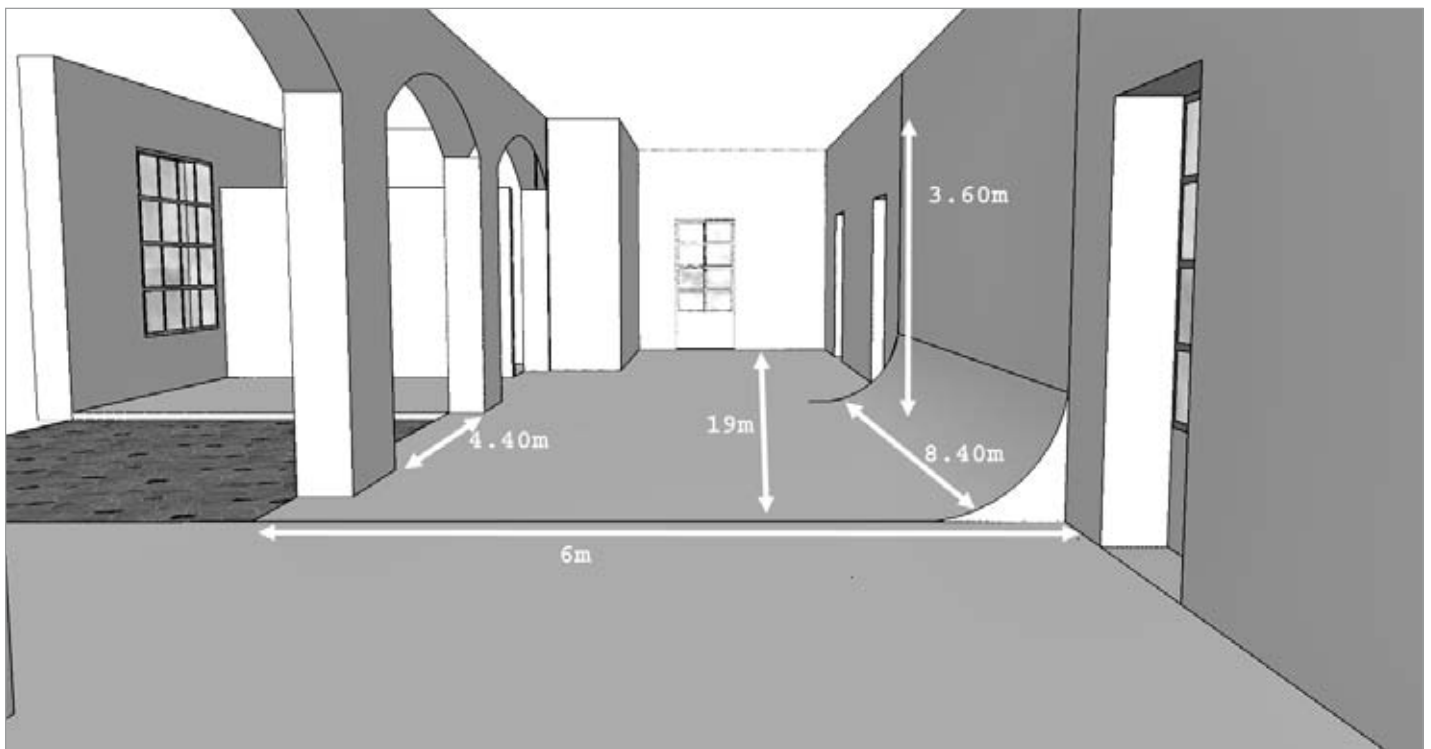
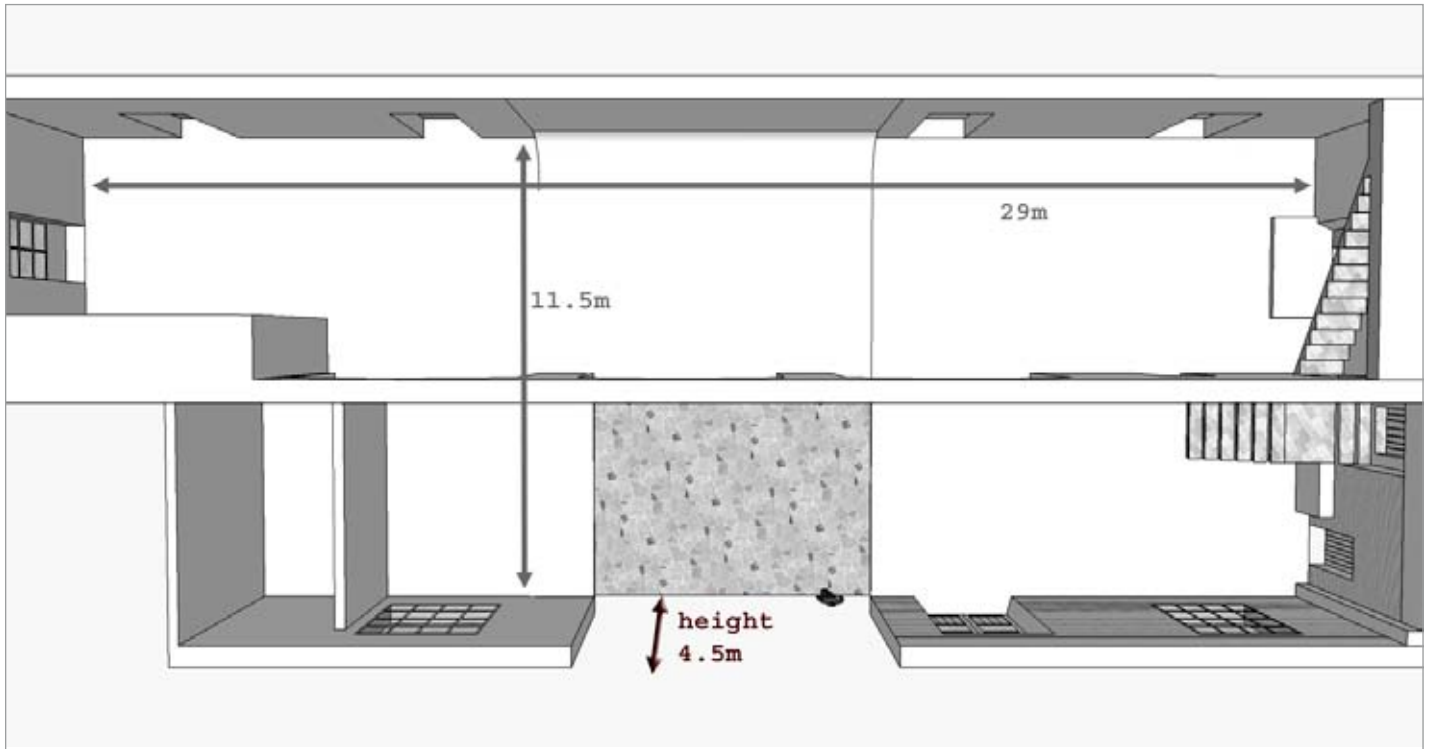














# station studio mallorca

## Driving Instructions

Palma -Inca motorway. Ma-13  
Exit 17 Consell/Binissalem.

over small roundabout.

Right at second roundabout. Now you are heading towards Binissalem. Ma-13A  
About 150mts, turn left at Cami des Pedac.

Drive along the curvy road. (cami des pedac)

Turn left at Cami Sant Antoni also sign for Can Arabi.  
If your at Gas station then you went too far.

At end of Sant Antoni turn left.

Turn next right at Can Arabi sign. (Cami Escola Graduada).

Turn left at crossing sign Can Arabi/Estacio. (Cami Sa Mostra).

Drive round the curves to the crossing.

Turn left towards Can Arabi, over the traintracks and IMMEDIATELY turn right.

Black open gate. This is Station Studio. Contact Damien if you get lost  
or just head for the train station.

Damien Rigo

t. [+34] 653 780 568

[www.stationstudiomallorca.net](http://www.stationstudiomallorca.net)

[info@stationstudiomallorca.net](mailto:info@stationstudiomallorca.net)